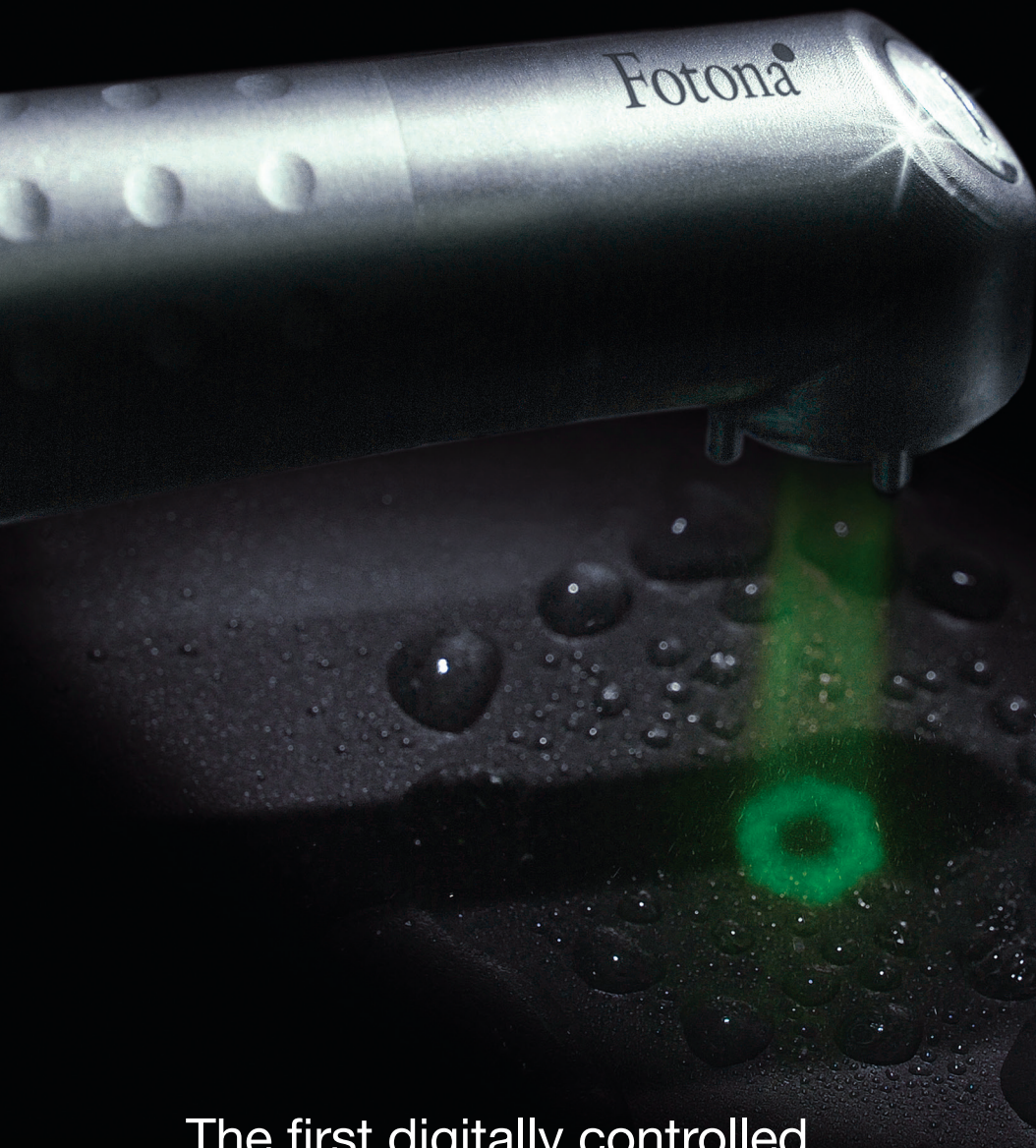


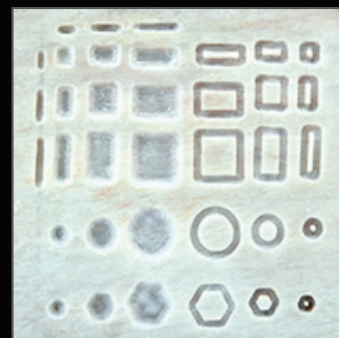
Fotona[®]
choose perfection



The first digitally controlled
dental laser handpiece

X-Runner[®]

- instantly adjustable spot size and shape
- precise coverage of large areas
- lightweight, ergonomic design
- for Fotona LightWalker AT laser systems



The universe at your fingertips.

• LightWalker[®]

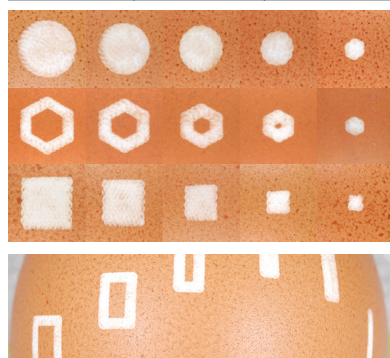
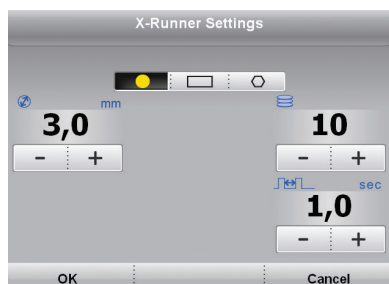
The first digitally controlled dental laser handpiece

X-Runner™ advanced handpiece technology

Introducing the world's first dental laser handpiece with instantly adjustable spot size and shape! Fotona's X-Runner enhances the precision of many dental laser treatments by helping practitioners swiftly and accurately guide the laser beam across the treatment surface.

How does X-Runner work?

With X-Runner, the shape and size of a treatment area are selected in advance, as shown in the picture below. By pressing a button on the screen, a large treatment surface (or only its border) can be selected, as well as the number of laser passes. Other parameters of the laser beam (energy, frequency,



Some of X-Runner's shapes and sizes, which can be selected from 2 mm to 6 mm in increments 0.5 mm.

mode) are set the same way as with Fotona's other laser handpieces. It can also be used in single-spot mode.

What are the benefits of using X-Runner?

Higher Precision: Many dental treatments require deep and/or wide cuts of high precision. Using X-Runner, the selected area is evenly and precisely treated without the need for repetitive and tiring hand movements.

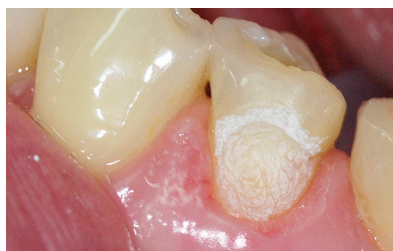
Speed: Automatic guidance of the laser beam allows for a higher repetition rate to be used.

Practicality: There is no need to switch between drills & saws of different sizes. The size and shape of the treatment zone is defined by a touch of a button on the display screen.

Ease of Use: X-Runner replaces multiple dental tools and makes treatments more precise, simple and easy!

Getting started with the X-Runner

The X-Runner digital handpiece is designed for the award-winning LightWalker® AT S dental laser. Contact your Fotona Distribution Partner for further details.



Clinical situation after fast ablation of an extensive old composite with X-Runner.

Applications for X-Runner:

- cavity/inlay preparation
- veneer preparation
- soft-tissue ablation
- bracket bonding
- apicoectomy
- implantology
- osteotomy



X-Runner, digitally controlled laser handpiece with circular, rectangular (line or square) and hexagonal shape (or shape outline) patterns.